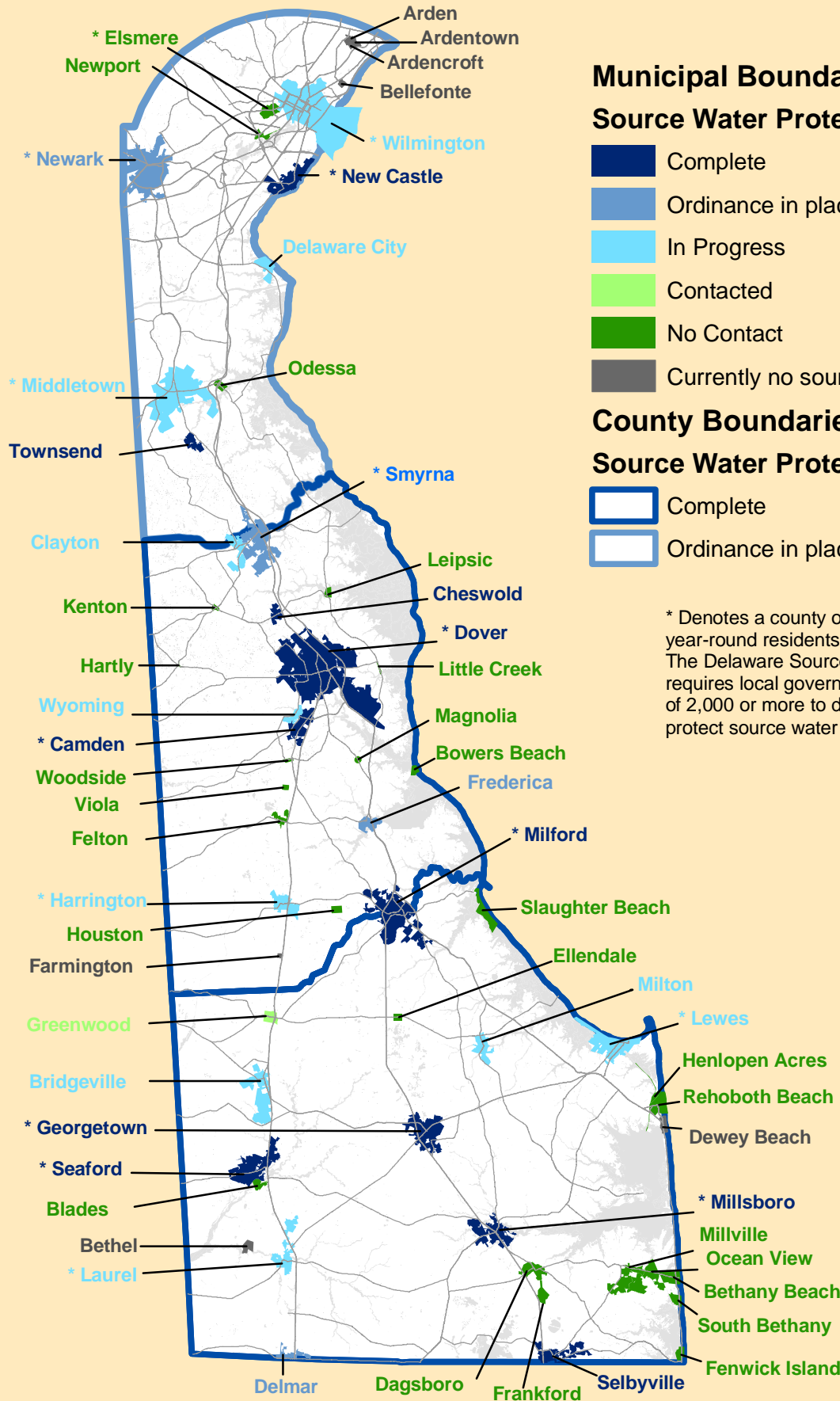


Status of Source Water Protection Ordinances in Delaware



Municipal Boundaries

Source Water Protection Ordinance Status

- Complete
- Ordinance in place, requiring update
- In Progress
- Contacted
- No Contact
- Currently no source water areas in boundaries

County Boundaries

Source Water Protection Ordinance Status

- Complete
- Ordinance in place, requiring update

* Denotes a county or a municipality with 2,000 or more year-round residents according to U.S. Census 2000. The Delaware Source Water Protection Law of 2001 requires local governments with year-round populations of 2,000 or more to develop map and regulations to protect source water areas by 2007.



July 8, 2008



Sources:
 Status of Source Water Protection Ordinances - Delaware Department of Environmental Control (DNREC) and Delaware Rural Water Association, July 8, 2008.
 Municipal Boundaries - Delaware Office of State Planning Coordination, May 2007.
 Roads - Delaware Department of Transportation, December 2006.
 Hydrology - USGS 7.5 Minute Series Topographic Maps. Created in cooperative agreement between the State of Delaware and the USGS (1991 - 1991), USGS DLG files (1993).

Note:
 This map is provided by the Institute for Public Administration (IPA) solely for display and reference purposes and is subject to change without notice. No claims, either real or assumed, as to the absolute accuracy or precision of any data contained herein are made by the IPA, nor will the IPA be held responsible for any use of this document for purposes other than which it was intended.